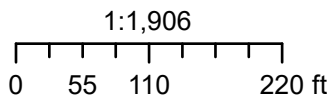
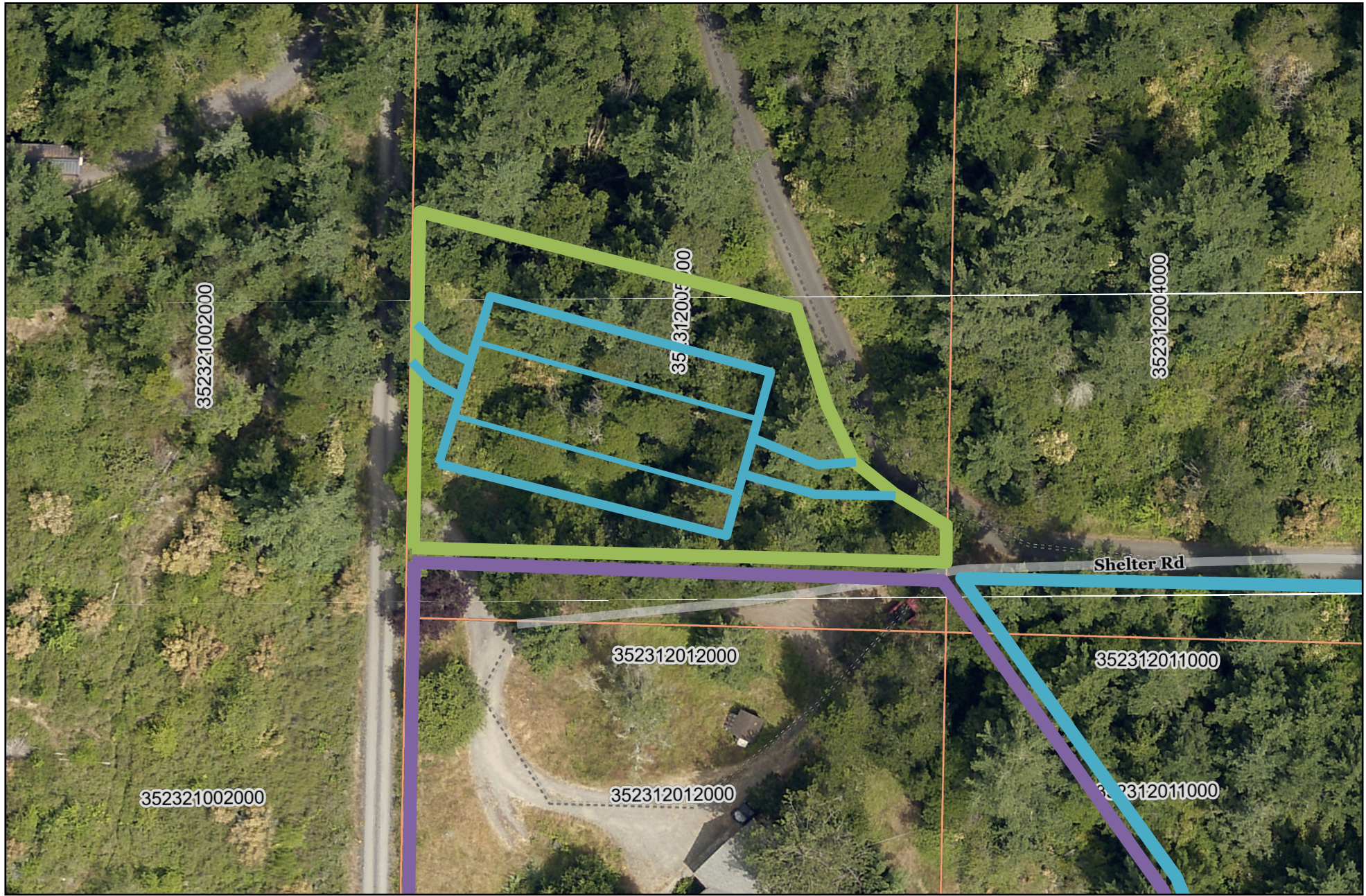




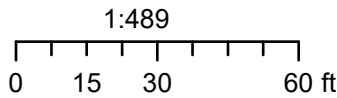
This map is derived from San Juan County's Geographic Information System (GIS). It is intended for reference only and is not guaranteed to survey accuracy. The information represented on this map is subject to change without notice.



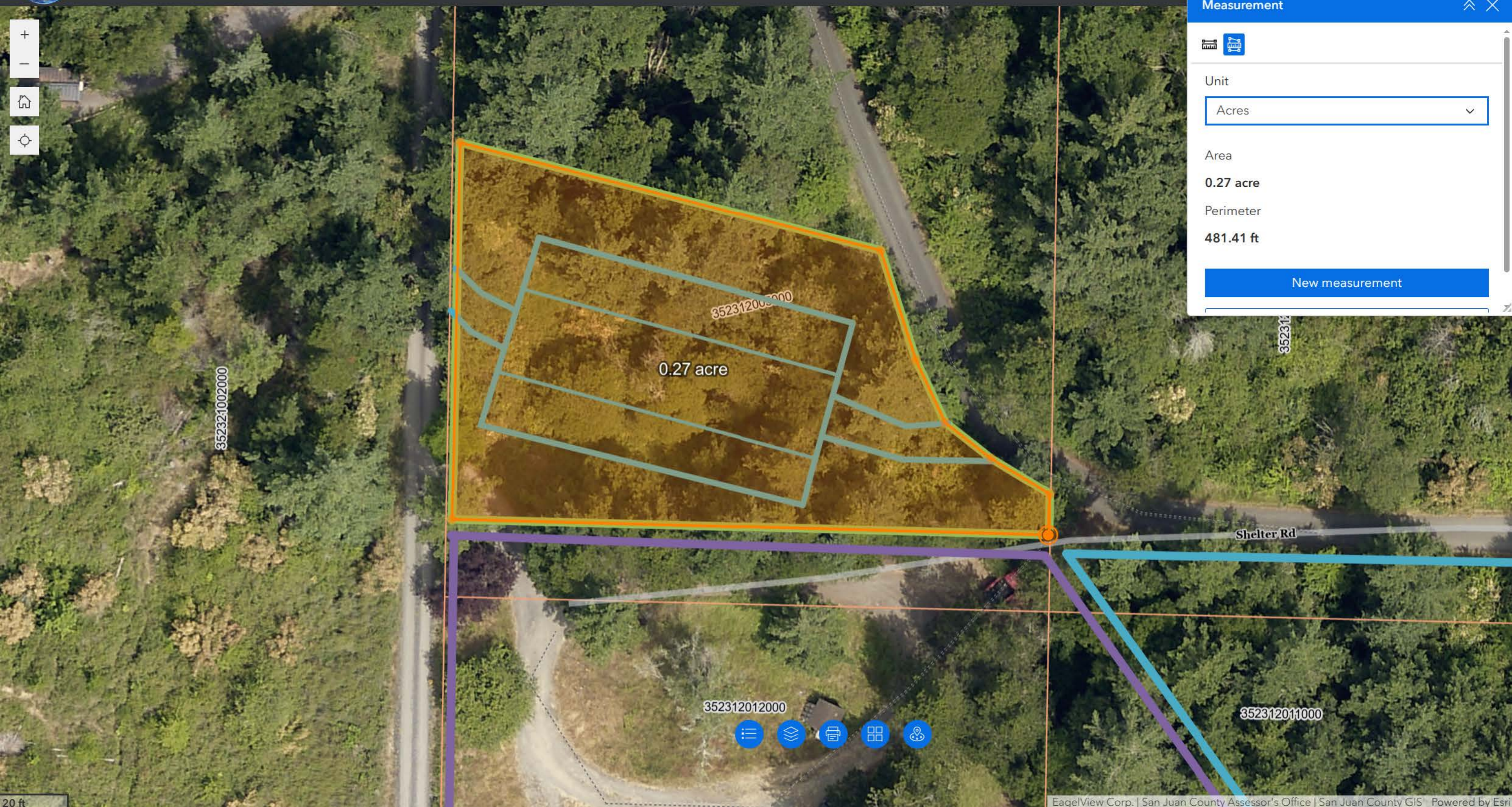
Polaris Webmap



This map is derived from San Juan County's Geographic Information System (GIS). It is intended for reference only and is not guaranteed to survey accuracy. The information represented on this map is subject to change without notice.



Polaris Webmap3



Measurement

Unit: Acres

Area: 0.27 acre

Perimeter: 481.41 ft

New measurement

